



MILES ESTATE AGENTS

**The Post House Lowton Trull
Taunton TA3 7SU Guide Price £525,000**



The Post House is a charming Detached stone period cottage situated at the foot of the Blackdown Hills in the Hamlet of Lowton. In the same hands for many years and once the local Post Office, we are delighted to bring this very special cottage to the market. The property offers huge potential to buyers looking to be surrounded by glorious unspoilt countryside yet only just over 4 miles from the centre of Taunton. There is a spacious Sitting Room with wood burning stove, separate Dining Room and Kitchen with a solid fuel Rayburn as well as a Utility and Cloakroom. On the first floor are 3 good sized bedrooms and a family bathroom. The Post House is set in about 0.4 acres of mature South facing gardens partly enclosed by an old stone wall with a small stream running through and picket fencing to the front where there is parking for 3 cars and a good sized single garage. Freehold. Council Tax Band F.





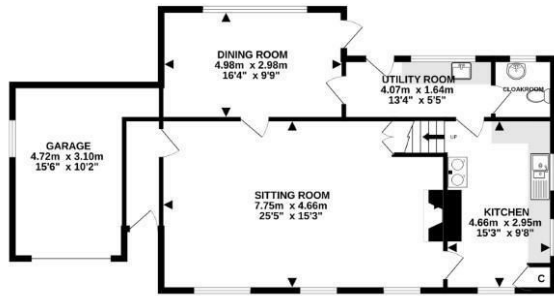
Features:

- Charming Cottage
- Spacious Sitting Room
- Separate Dining Room
- Kitchen with Rayburn
- Utility & Cloakroom
- 3 Generous Bedrooms
- Family Bathroom
- Approx 0.4 Acres
- South Facing Gardens
- Parking for 3 Cars
- Single Garage
- Freehold
- Council Tax Band F

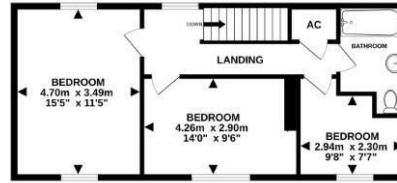


Energy Efficiency Rating	Current	Potential
Very Low A		
Low B		
Medium C		
Below Average D		
Poor E		
Very Poor F		
Extremely Poor G		
Energy Efficiency Rating	52	5
England & Wales	2020/1/15	2020/1/15

GROUND FLOOR
91.1 sq.m. (981 sq.ft.) approx.



1ST FLOOR
49.4 sq.m. (532 sq.ft.) approx.



TOTAL FLOOR AREA: 140.5 sq.m. (1513 sq.ft.) approx.
Made with Metropix ©2023



Viewings strictly through the selling agents:

Miles Estate Agents

2 Piffin Lane, Bishops Lydeard, Taunton, Somerset, TA4 3AS

Tel: 01823 470 500

lydeard@milesestateagents.co.uk

www.milesestateagents.co.uk

rightmove 

Zoopla.co.uk

 OnTheMarket.com

MILES ESTATE AGENTS

